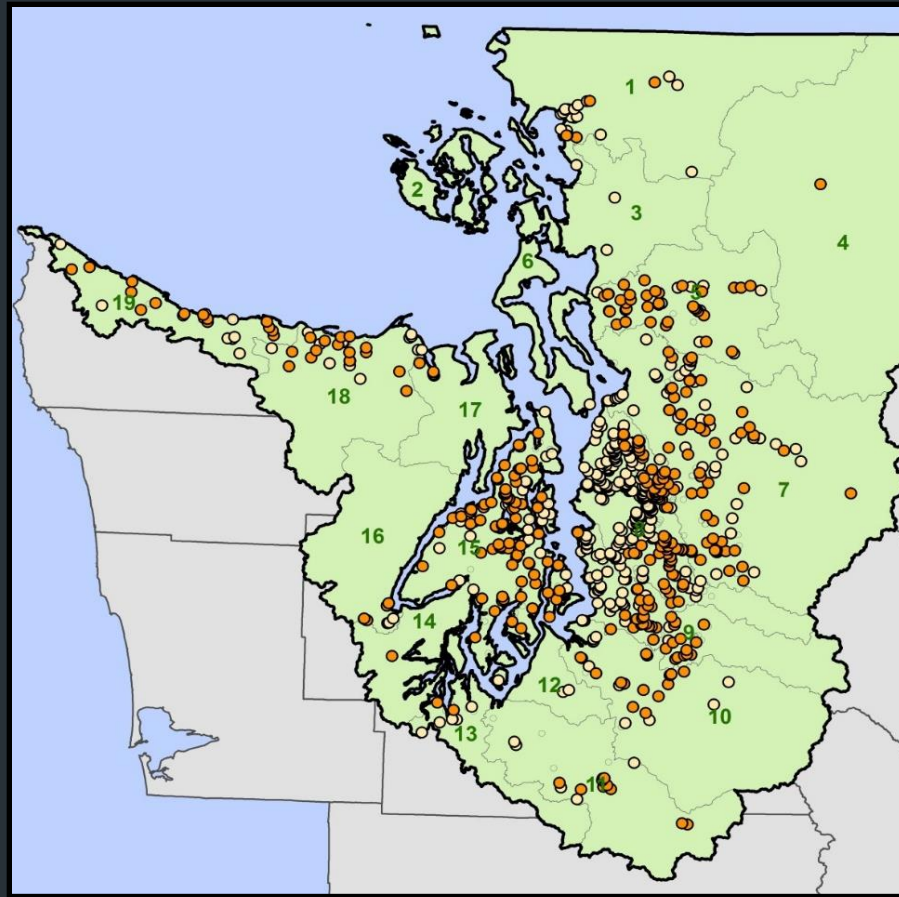


RESTORING FAIR SITES: RESTORATION DECISION FRAMEWORK



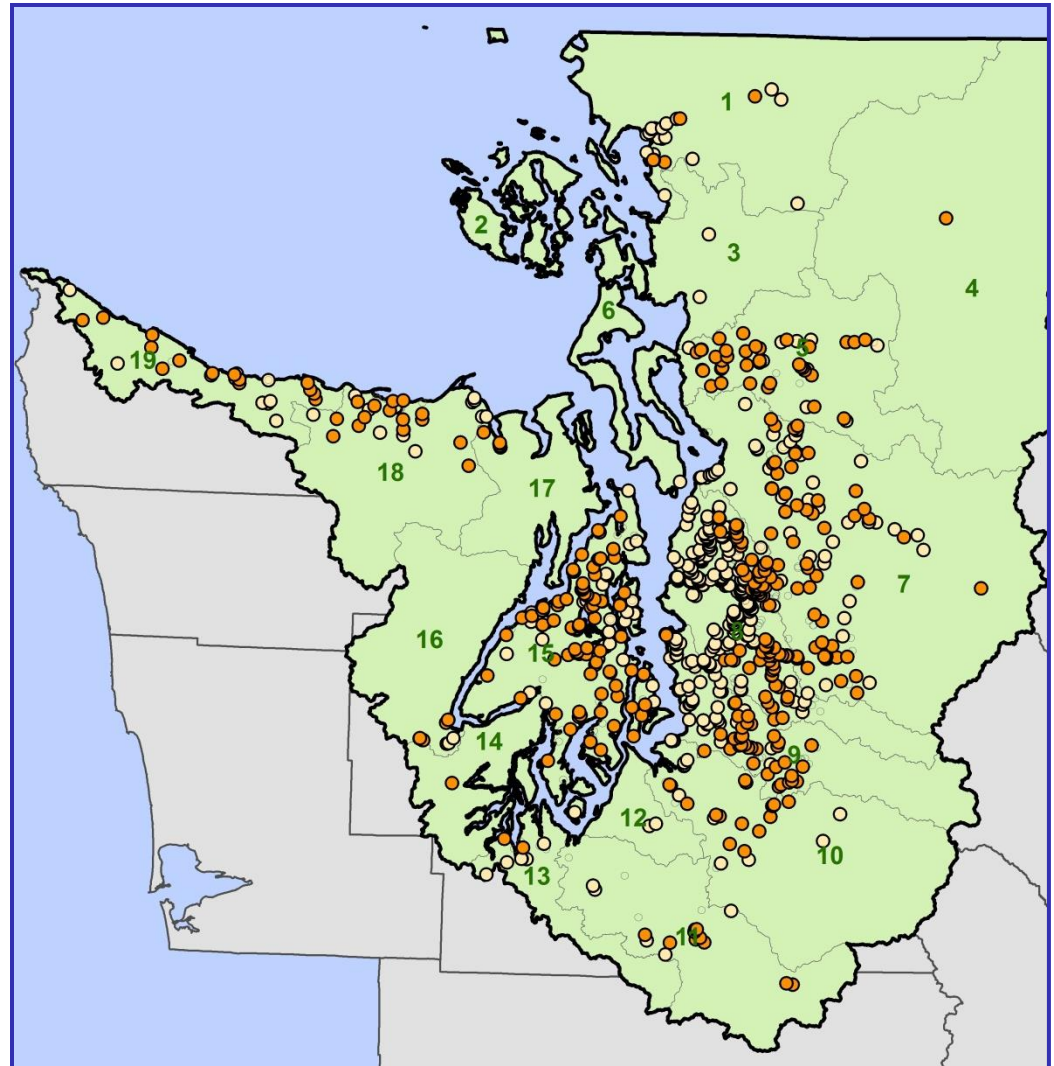
“Fair” Sites (28-36) = Restoration

● “Fair” average

○ “Fair” at least once

🐛 **648** sites scored “fair”
at least once

🐛 **439** sites with median
“fair” scores

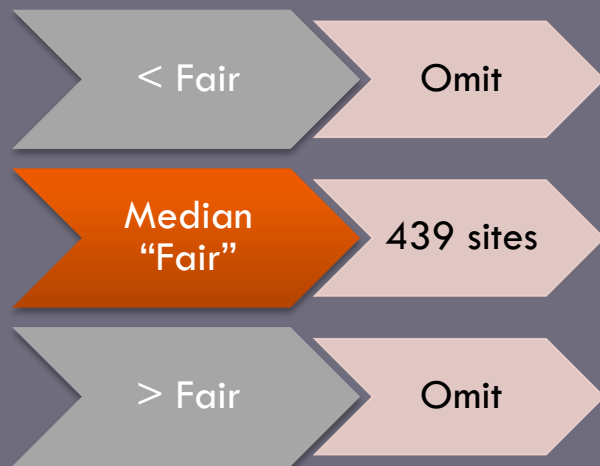


Restoration Decision Framework

Part 1

Filtering

Applied first. Criteria used to reduce number of sites considered.



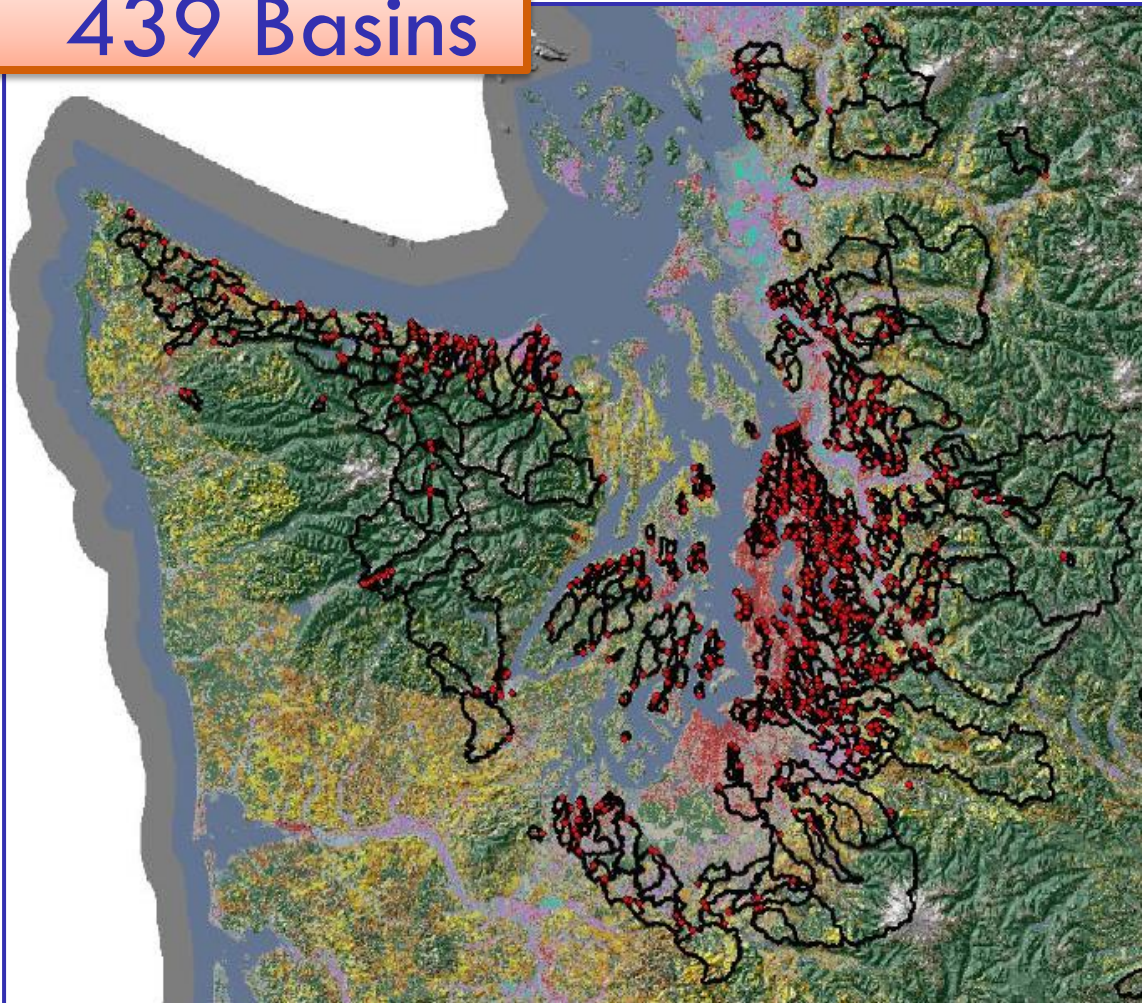
Part 2

Ranking

Combination of applied information used to prioritize the final filtered list for restoration.

Landscape Analysis

439 Basins



🐜 **Basin delineation**

🐜 **Scale**

🐜 Watershed

🐜 Local (1 km)

🐜 Buffer (90-m)

🐜 **Metrics**

🐜 Landcover

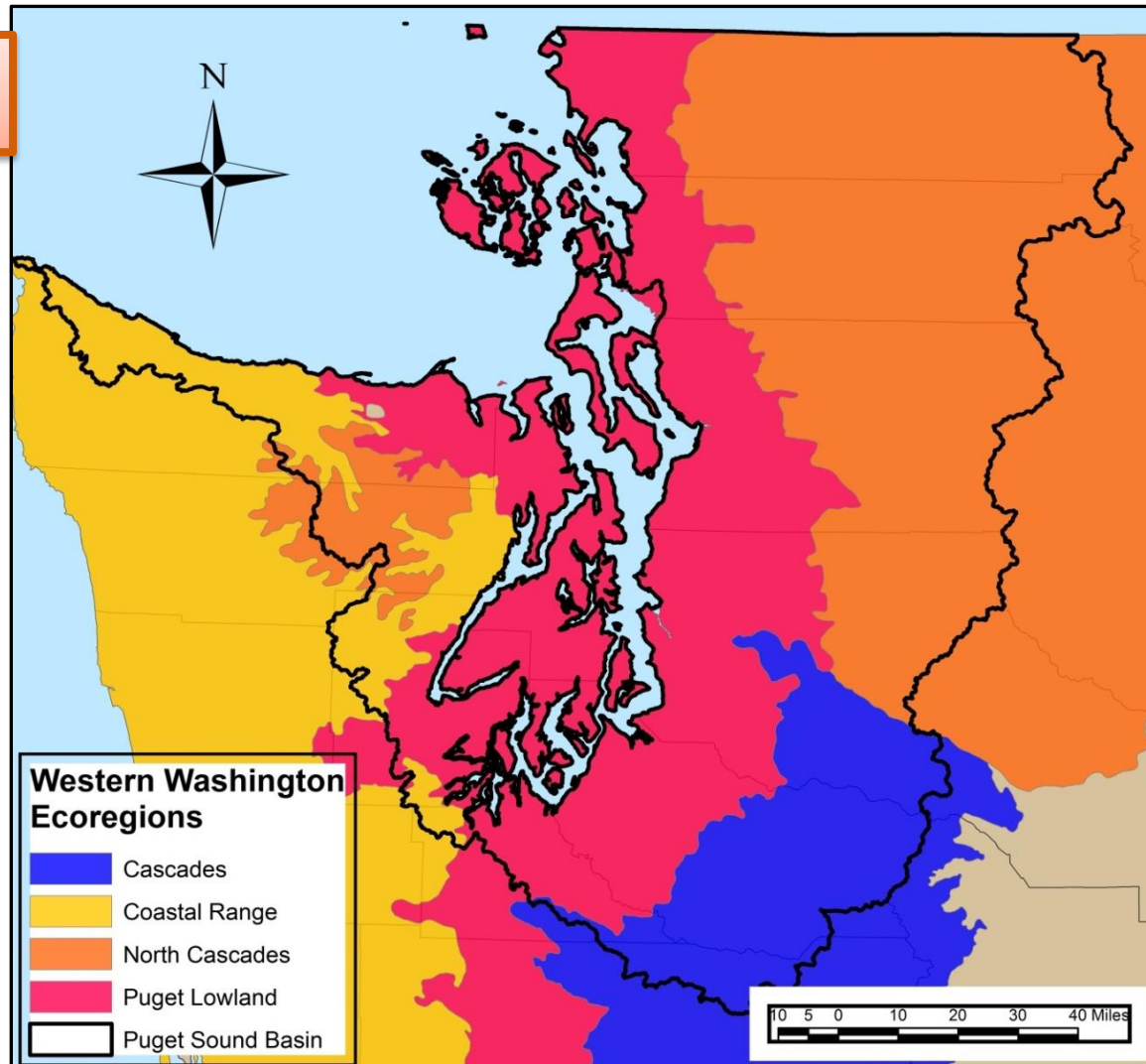
🐜 Zoning

🐜 Site characteristics



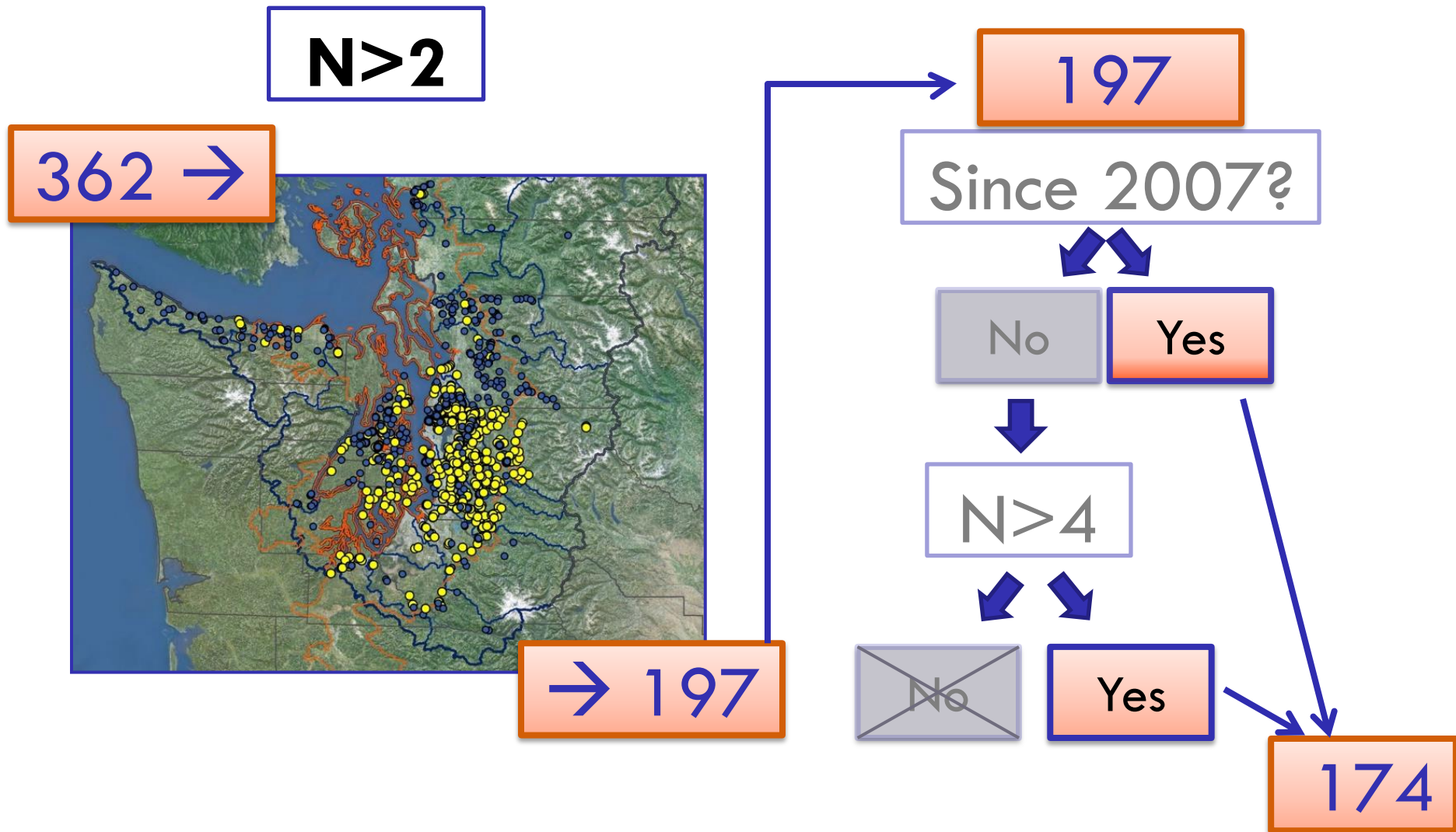
Filtering: Ecoregion

439 →



→ 362

Filtering: Sampling History

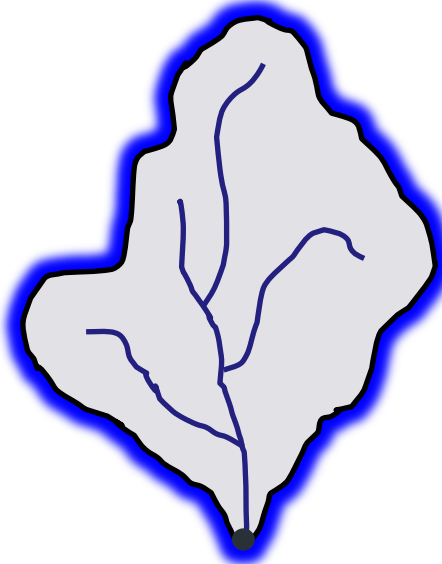


Filtering: Watershed Area

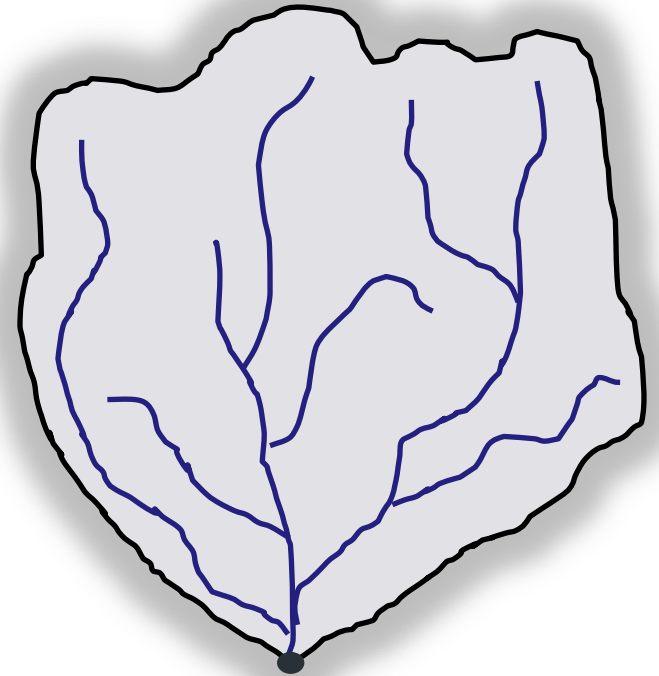
174 →



<200 Acres:
Too Small



200-3000 Acres:
Just Right



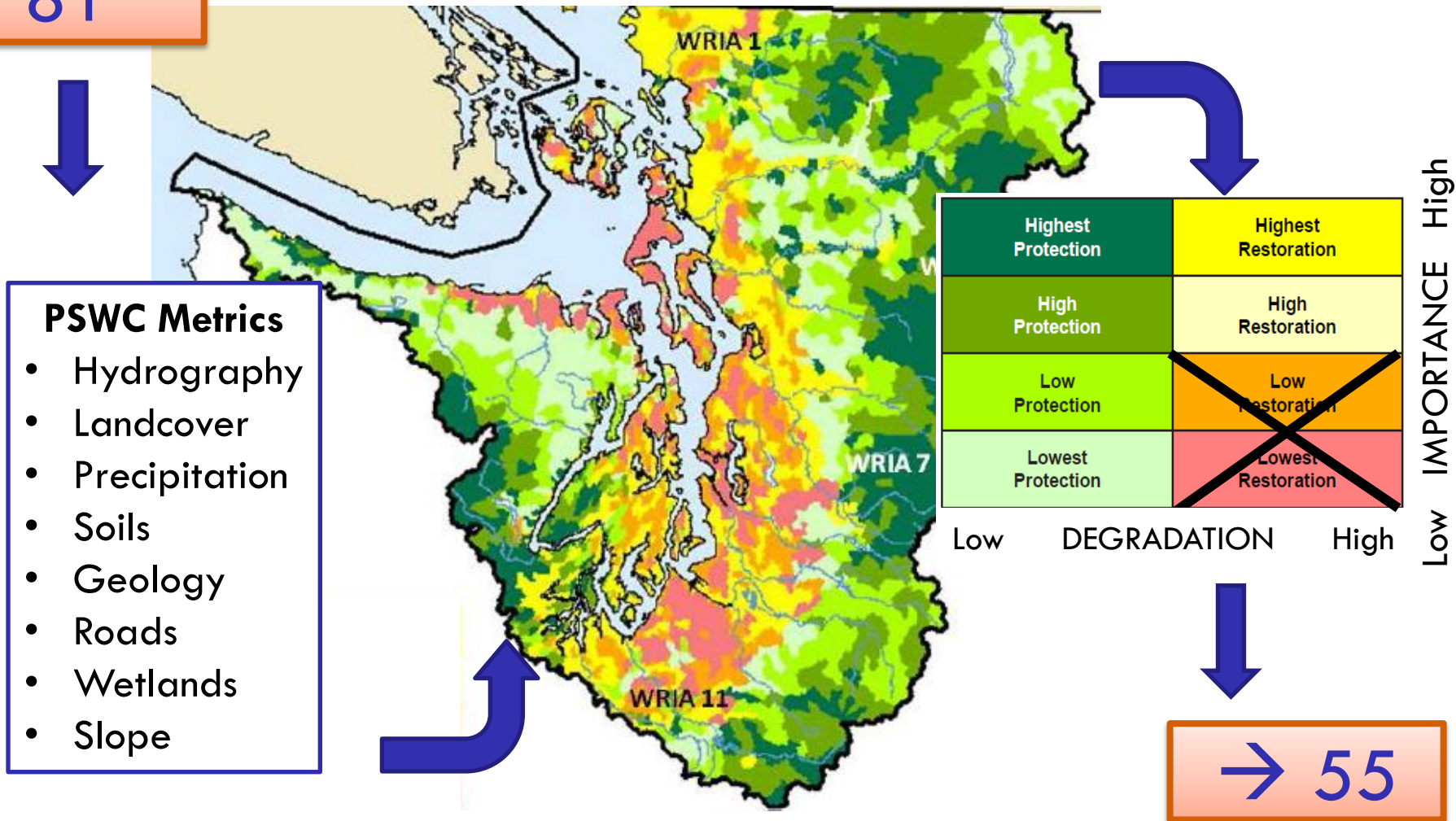
>3000 Acres:
Too Big

→ 81

Filtering: PSWC

81

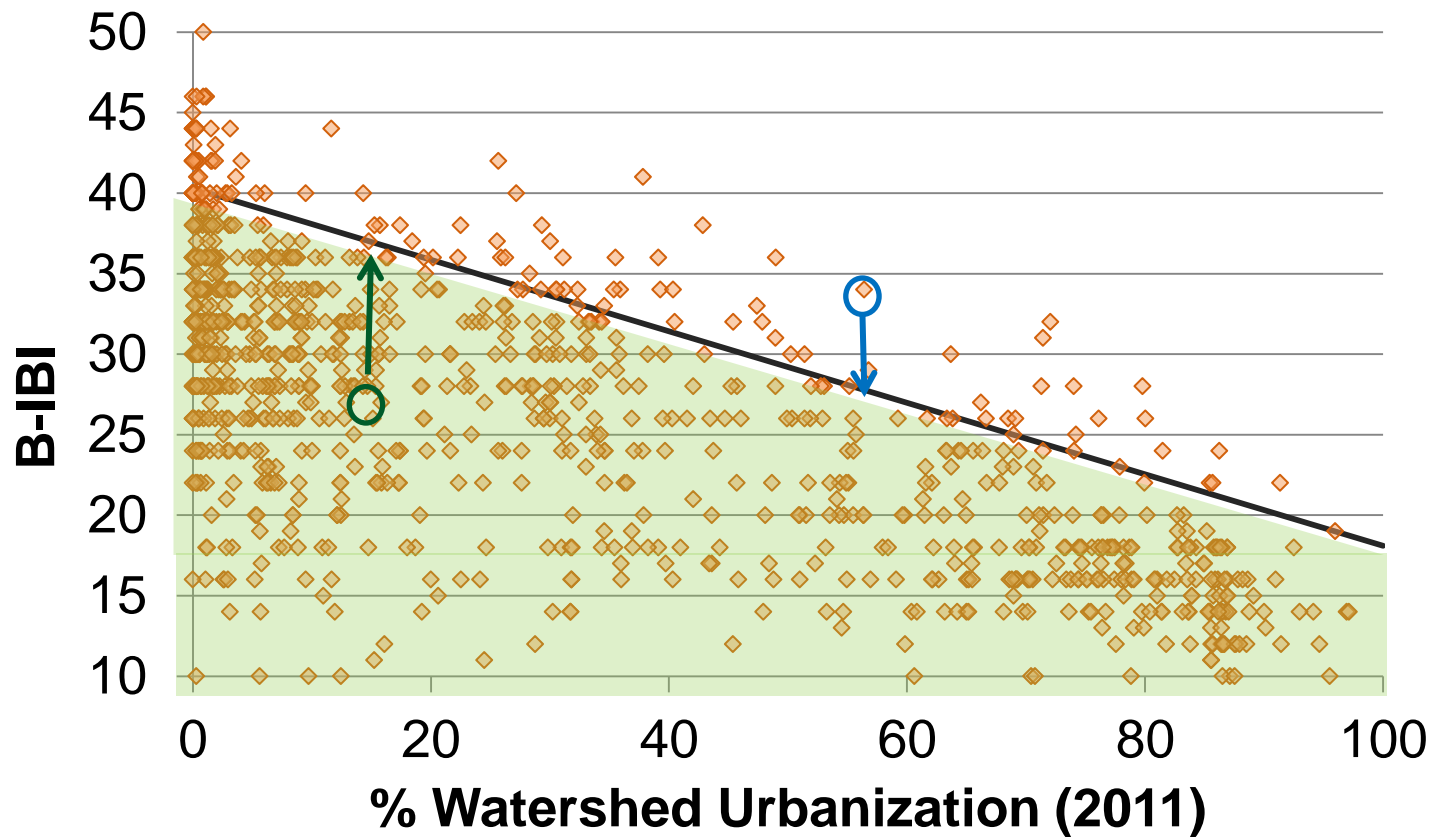
PS Watershed Characterization



Potential Ranking Criteria



Biotic Potential



Potential Ranking Criteria



Fish Use (Chinook, coho, steelhead)

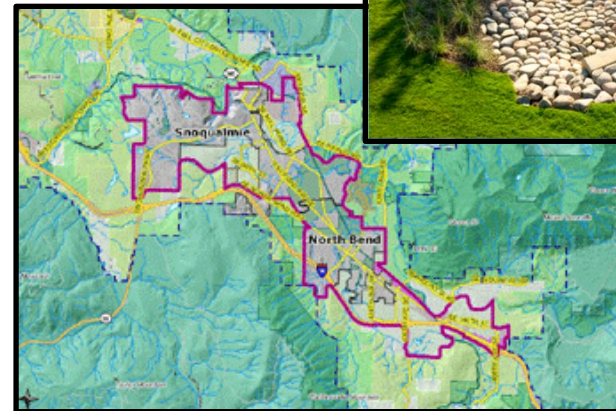
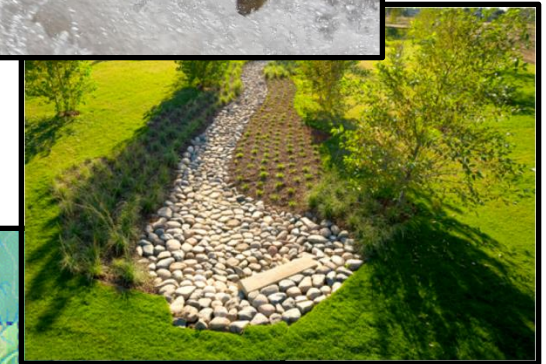
-  Basin Average Intrinsic Potential

Stormwater

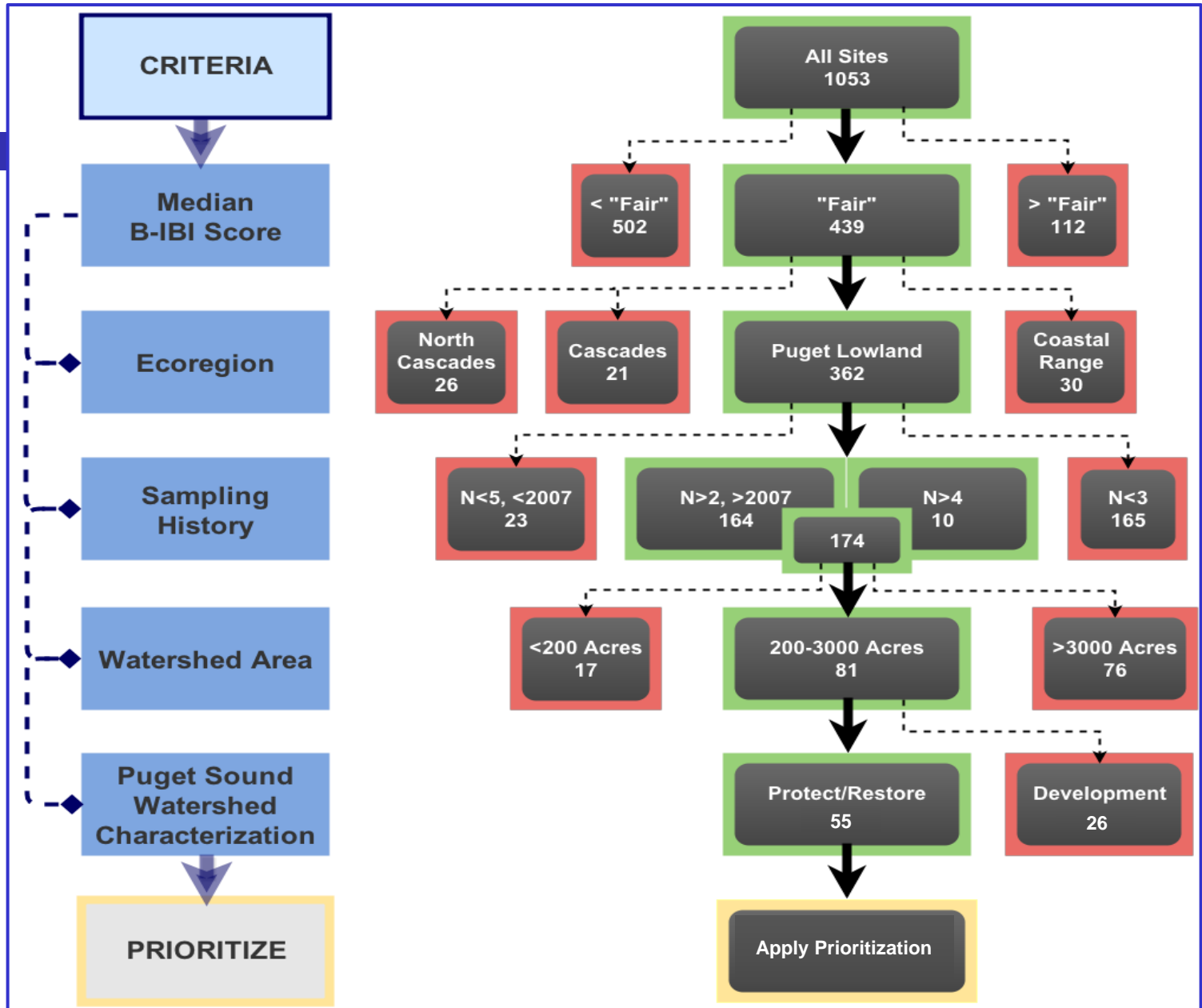
-  Align with stormwater retrofit priorities

Price and Feasibility

-  Funding limits
-  Property acquisition



Recap:



Top 55 sites

WRIA #	WRIA Name	Sites in Top 30
5	Stillaguamish	2
7	Snohomish	14
8	Cedar-Sammamish	7
9	Duwamish-Green	10
10	Puyallup-White	1
13	Deschutes	3
15	Kitsap	17
18	Elwha-Dungeness	1

